

Introducing...

**Luxwood**<sup>™</sup>  
Software Tools



# Building Information Modeling...

**Luxwood**<sup>™</sup>  
Software Tools





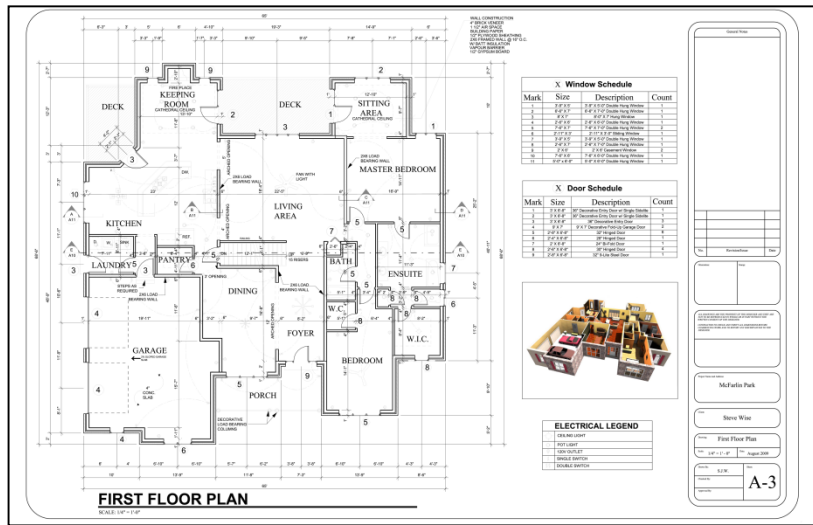
**Generate Project Estimate**

Archive Ver Templates

Quantity Report | Cut List

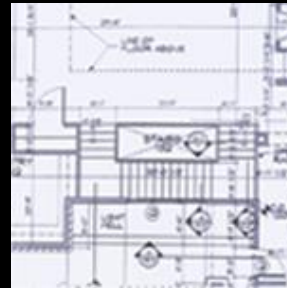
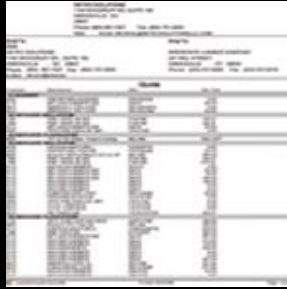
<b>Ground Floor</b>		
<b>Division</b>	<b>Description</b>	<b>Quantity</b>
	1'-10' 1/2" X 6'-8" Rectangular Opening	1.00
06090	1 Pound Roofing Nails	18.82
06110	2 x 4 x 8'	144.00
06110	2 x 6 x 8'	65.00
06110	2 x 6 x 10'	35.00
06110	2 x 6 x 14'	7.00
06110	2 x 6 x 16'	1.00
06110	Stud Count	88.00
06110	Frame Opening / 2" Header	2.00
06110	Frame Opening / 6" Header	2.00
06110	1" x 3" Furring- 16" O.C.	564.70
06110	1" x 3" Bridging 6" O.C.- 16" Centers	564.70
06110	1/2" Plywood Sheathing	752.82
06110	Drip Edge	752.82
06110	Asphalt Shingles	752.82
06160	1/2" Standard Sounce Sheathina	846.69
06160	4 x 8 Plywood Sheathing Count	71.00
06160	5/8" Plywood Subfloor Sheathing	564.70
06200	3' Wide Straight Stairs, Notched Stringer	18
06430	9-1/2" x 1-1/4" Thick Pine Stair Tread (3' Stair)	18.00
06430	3/4" Thick Pine Riser (3' Stair)	18.00
06430	2" x 10" Stringer (3 per Riser)	18.00

Quantity Report File: C:\...\_Project1.TXT

[illegible]

# Building Information Modeling...

**Luxwood**<sup>TM</sup>  
Software Tools



3D Design

Construction Documents

Detailed Framing

Quantity Takeoff

Interior Design

Landscaping

Green Building Integrated

Link to Structural Analysis



# ...from Concept to Construction

**Luxwood**<sup>TM</sup>  
Software Tools



Image courtesy of Jack Zimmer, Zimmer Design

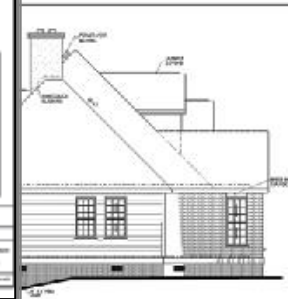
“Total Home not only fulfils my 2D and 3D Architectural needs, it simply ‘feels good’. It is fun, accurate and customizable.”

***Jack Zimmer, Zimmer Designs, Milwaukee, WI***

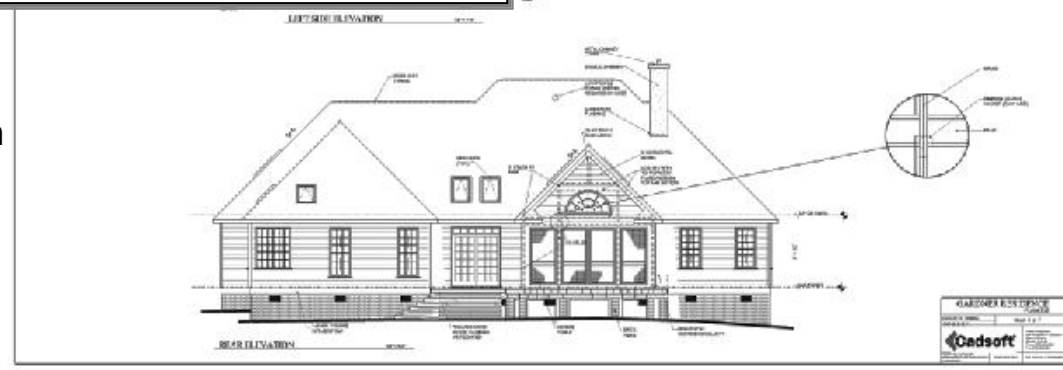


Actual completed project

**Luxwood**™  
Software Tools



**Robert Platt, Designs for Living, Atlanta, GA**





# Point of Sale Integration

**Luxwood**<sup>TM</sup>  
Software Tools



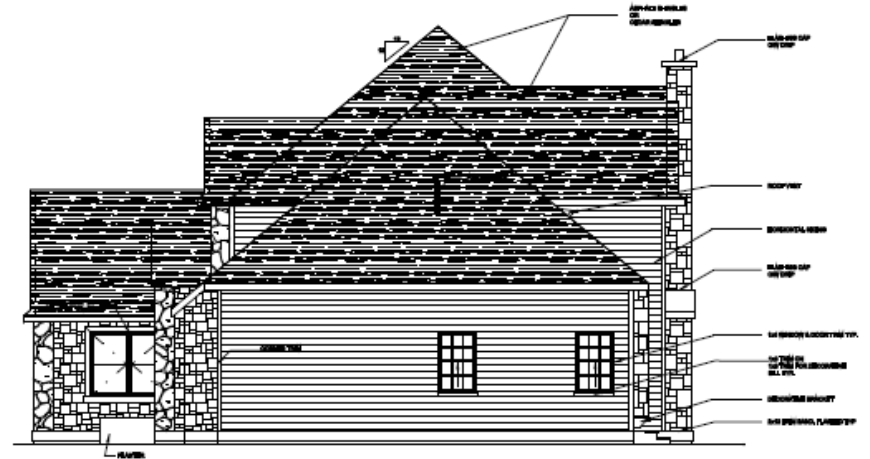
- Epicor
- ProfitMaster
- Prism
- OGC
- Omni

# Explore framing alternatives

**Luxwood**<sup>™</sup>  
Software Tools







**Scale 1/4" = 10'**

Dots:  $14^{\circ} = 10^{\circ}$ 

Scale 1:4" = 1'0"

Scale 1/4" = 1'0"

**Luxwood**<sup>TM</sup>  
Software Tools





Convey your ideas with clarity

**Luxwood**<sup>™</sup>  
Software Tools



# Integrated with 20-20 Design

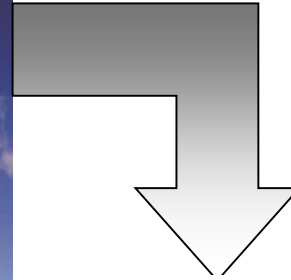
**Luxwood**<sup>™</sup>  
Software Tools





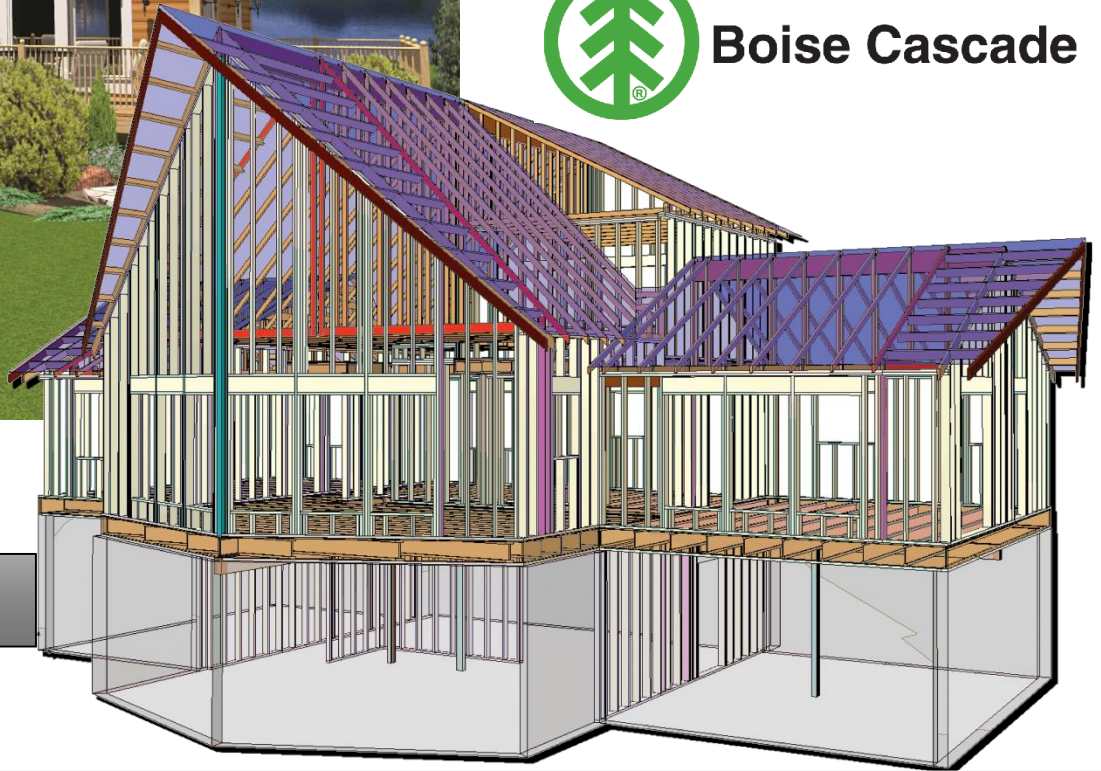
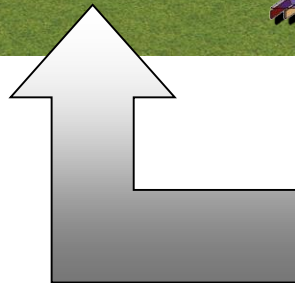
# Integration with EWP

**Luxwood**<sup>™</sup>  
Software Tools

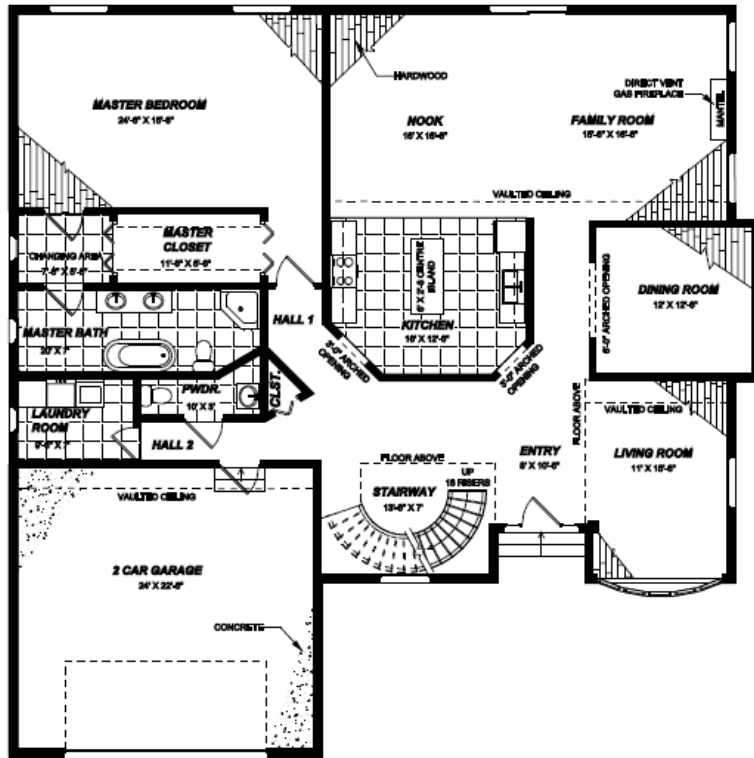


 **Weyerhaeuser**

 **Boise Cascade**

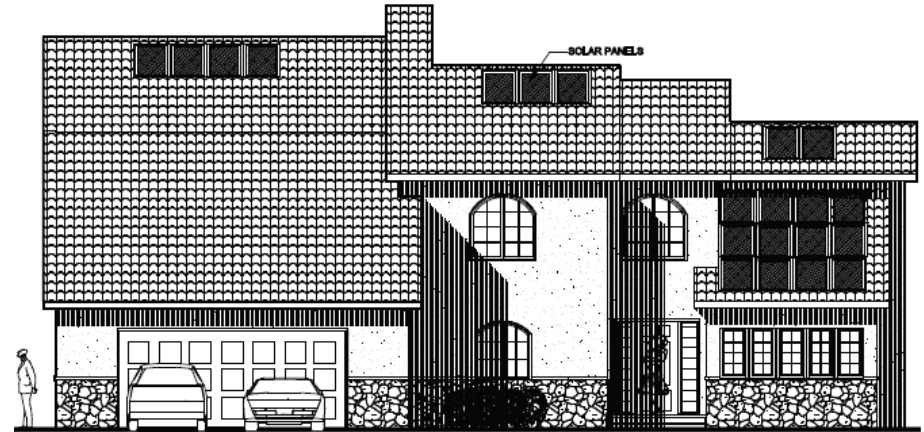


# Presentation drawings



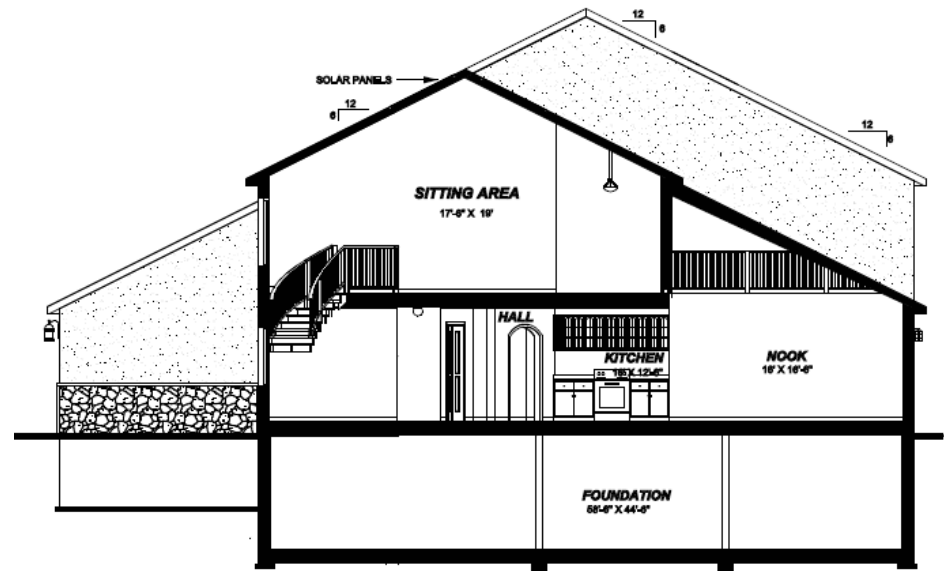
**FIRST FLOOR PLAN**

SCALE: 1/4" = 1'-0"



**FRONT ELEVATION**

SCALE: 1/4" = 1'-0"





# Landscape design

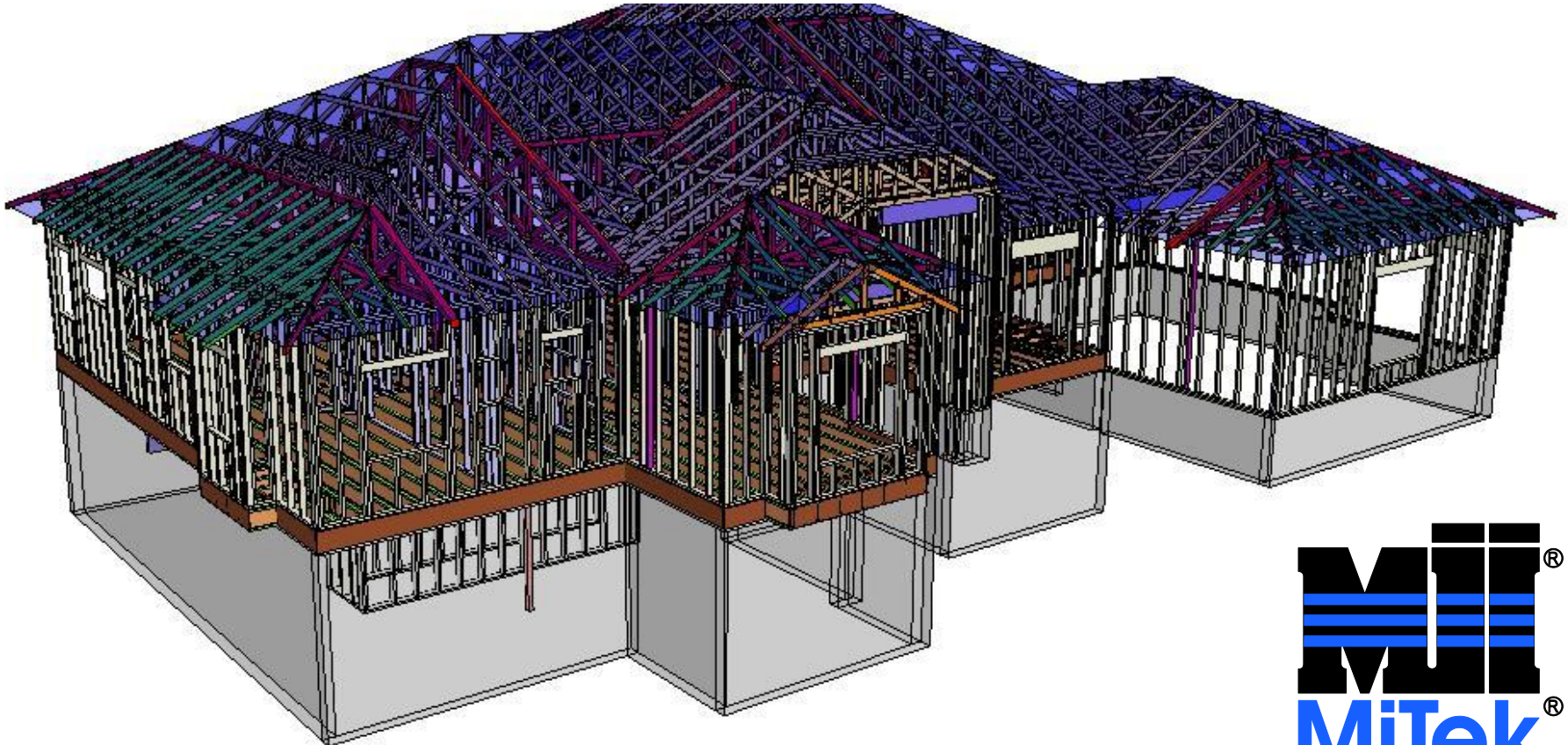
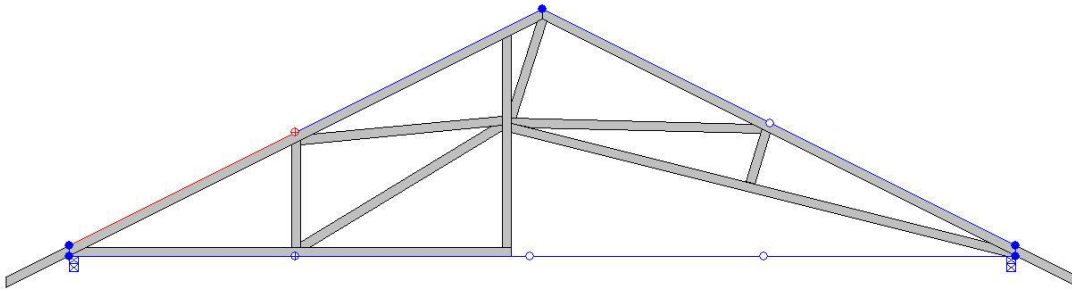
**Luxwood**<sup>™</sup>  
Software Tools





# Link with MiTek® Sapphire Structure™

**Luxwood**™  
Software Tools



**MiTek**®  
MiTek®



# Comprehensive material lists

**Generate Project Estimate**

Archivo Ver Templates

Standard Report Form

Quantity Report | Cut List

Division	Description	Quantity	Unit	Price
<b>Ground Floor</b>				
	1'-10 1/2" X 6'-8" Rectangular Opening	1.00	Ea.	\$0.00
06090	1 Pound Roofing Nails	18.82	lbs	\$1.95
06110	2 x 4 x 8'	144.00	Ea.	\$2.96
06110	2 x 6 x 8'	66.00	Ea.	\$4.56
06110	2 x 6 x 10'	36.00	Ea.	\$5.71
06110	2 x 6 x 14'	7.00	Ea.	\$7.98
06110	2 x 6 x 16'	1.00	Ea.	\$9.12
06110	Stud Count	88.00	Studs	\$0.00
06110	Frame Opening / 2' Header	2.00	Ea.	\$2.75
06110	Frame Opening / 6' Header	2.00	Ea.	\$8.00
06110	1" x 3" Furring- 16" O.C	564.70	S.F.	\$0.21
06110	1" x 3" Bridging 6' O.C - 16" Centers	564.70	S.F.	\$0.02
06110	1/2" Plywood Sheathing	752.82	S.F.	\$0.70
06110	Drip Edge	752.82	S.F.	\$0.29
06110	Asphalt Shingles	752.82	S.F.	\$0.60
06160	1/2" Standard Spruce Sheathing	846.69	S.F.	\$0.54
06160	4' x 8' Plywood Sheathing Count	71.00	Sheets	\$0.00
06160	5/8" Plywood Subfloor Sheathing	564.70	S.F.	\$0.68
06200	3' Wide Straight Stairs, Notched Stringer	18	Risers	\$0.00
06430	9-1/2" x 1-1/4" Thick Pine Stair Tread (3' Stair)	18.00	Risers	\$15.15
06430	3/4" Thick Pine Riser (3' Stair)	18.00	Risers	\$5.25
06430	2" x 10" Stringer (3 per Riser)	18.00	Risers	\$1.33

Quantity Report File: C:\...\Project1.TXT

? Save and CloseSalir

# Quote Generator



## DETECSOLUTIONS

1140 WOODRUFF RD. SUITE 106  
GREENVILLE, SC  
29607

Phone: (864) 987-1007 Fax: (864) 751-2829  
Web: Email: DKUKOL@DETECSOLUTIONS.LLC.COM

### Sold To:

9999  
DETEC SOLUTIONS  
1140 WOODRUFF RD., SUITE 106  
GREENVILLE, SC. 29607  
Phone: (864) 987-1007 Fax: (864) 751-2829  
E-Mail: dkukol@deteco

### Ship To:

LUMBER COMPANY  
247 MILL STREET  
GREENVILLE, CT. 06830  
Phone: (203) 531-8885 Fax: (203) 531-6318

## Quote

Category	Description	SKU	Qty Unit
<b>01-BASEMENT</b>			
0430	FIRE RETARD 23/32X4X8	FR2332CDX	5 PC
0115	SPF 2X4X16 #2&BTR S4S	S2416	40 PC
5815	SIMPSON 3-1/2X8 JOIST	SSTHJUS410	5 EA
5815	SIMPSON 3-1/2X7 JOIST	SSTHJUS48	92 EA
<b>03-1ST FLOOR - WALL SYSTEM</b>			
1380	PINE 1X4XRL #2 S4S	P14COM	105 LF
1380	PINE 1X5XRL #2 S4S	P15COM	344 LF
0115	SPF 2X4X16 #2&BTR S4S	S2416	83 PC
0405	TRTD PINE 2X4X12 #1 ABV	T24121AG	4 PC
<b>04-2ND FLOOR - FLOOR SYSTEM</b>			
8505	1/2" x 8" SII Decker - Owens Corning	MILLING	1063 LNFT
<b>05-2ND FLOOR - WALL SYSTEM</b>			
0705	FIR 23/32 4X8 STURD-I-	F2332SFTG	6 PC
0430	FIRE RETARD 15/32 4X8	FR1532CDX	62 PC
8805	Simpson AB Post Base 3-1/2" x 5-1/4"	MILLING	564 EA
1380	PINE 1X4XRL #2 S4S	P14COM	330 LF
1380	PINE 1X5XRL #2 S4S	P15COM	1373 LF
0115	WW 2X10X14 #2&BTR	S21014	3 PC
0115	SPF 2X4X12 #2&BTR S4S	S2412	42 PC
0115	SPF 2X4X14 #2&BTR S4S	S2414	18 PC
0115	SPF 2X4X16 #2&BTR S4S	S2416	180 PC
0115	WW 2X6X16 #2&BTR	S2616	139 PC
0115	WW 2X8X10 #2&BTR	S2810	9 PC
0115	WW 2X8X12 #2&BTR	S2812	9 PC
5815	Z-MAX 2X8-8 SGL JOIST	SSTLUS28Z	40 EA
0405	TRTD PINE 2X12X12 #1	T212121AG	3 PC
0405	TRTD PINE 2X4X12 #1 ABV	T24121AG	8 PC
0210	TJ LVL 1 3/4X14X12	TJLVL1412	6 PC
0210	TJ LVL 1 3/4X14X14	TJLVL1414	6 PC
0210	PGL PARALLAM	TJLVL312T914	204 LF
<b>06-3RD FLOOR - FLOOR SYSTEM</b>			
7145	GE PL SUBFLOOR ADH 250Z	GEST77000	292 EA
8805	Simpson STC Truss Clip	MILLING	383 EA
0710	OSB 23/32 4X8 STURD-I-	OSB2332SFTG	876 PC
1380	PINE 1X3X12 #2	P13122PR	292 PC
0115	SPF 2X4X16 #2&BTR S4S	S2416	581 PC
0115	WW 2X6X12 #2&BTR	S2612	213 PC
0115	WW 2X6X16 #2&BTR	S2616	176 PC
0115	WW 2X8X8 #2&BTR	S2808	269 PC
0115	WW 2X8X12 #2&BTR	S2812	8 PC
0115	WW 2X8X14 #2&BTR	S2814	5 PC
0115	WW 2X8X16 #2&BTR	S2816	267 PC
5815	SIMPSON 2-3/4X4-1/2	SSTA35F	427 EA
5815	Z-MAX 2X8 SGL JOIST	SSTLUS28Z	577 EA
0115	WW 2X12X10 #2&BTR	SW21210	33 PC
0115	WW 2X12X14 #2&BTR	SW21214	3 PC

\$66.69

\$57.11

\$48.95

\$172.75



# Unparalleled roof designer

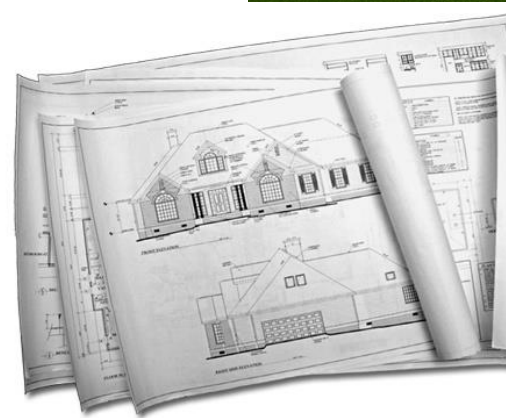
**Luxwood**<sup>TM</sup>  
Software Tools



# Your complete solution

**Luxwood**<sup>TM</sup>  
Software Tools

- ✓ Easiest to use building design software!
- ✓ True Building Information Modeling (BIM)
- ✓ Dynamic sales presentations
- ✓ Detailed working drawings
- ✓ Accurate bill of materials
- ✓ Automatic schedules
- ✓ Wall, floor and roof framing
- ✓ Optimized cut lists
- ✓ Quote Generator
- ✓ Site planning and landscaping
- ✓ Third party analysis



Sample Project Estimate

20000-BASEMENT 2nd FLOOR WALL	Description:	Unit	Description:
24100	Quantity:	100	2x10-16 Douglas Fir 2x10
24101	28	PC	2x10-16 Douglas Fir 2x10
24102	88	PC	2x10-16 Douglas Fir 2x10
24103	8	PC	2x10-16 Douglas Fir 2x10
24104	8	PC	2x10-16 Douglas Fir 2x10
24105	8	PC	2x10-16 Douglas Fir 2x10
24106	8	PC	2x10-16 Douglas Fir 2x10
24107	8	PC	2x10-16 Douglas Fir 2x10
24108	8	PC	2x10-16 Douglas Fir 2x10
24109	8	PC	2x10-16 Douglas Fir 2x10
24110	8	PC	2x10-16 Douglas Fir 2x10
24111	8	PC	2x10-16 Douglas Fir 2x10
24112	8	PC	2x10-16 Douglas Fir 2x10
24113	8	PC	2x10-16 Douglas Fir 2x10
24114	8	PC	2x10-16 Douglas Fir 2x10
24115	8	PC	2x10-16 Douglas Fir 2x10
24116	8	PC	2x10-16 Douglas Fir 2x10
24117	8	PC	2x10-16 Douglas Fir 2x10
24118	8	PC	2x10-16 Douglas Fir 2x10
24119	8	PC	2x10-16 Douglas Fir 2x10
24120	8	PC	2x10-16 Douglas Fir 2x10
24121	8	PC	2x10-16 Douglas Fir 2x10
24122	8	PC	2x10-16 Douglas Fir 2x10
24123	8	PC	2x10-16 Douglas Fir 2x10
24124	8	PC	2x10-16 Douglas Fir 2x10
24125	8	PC	2x10-16 Douglas Fir 2x10
24126	8	PC	2x10-16 Douglas Fir 2x10
24127	8	PC	2x10-16 Douglas Fir 2x10
24128	8	PC	2x10-16 Douglas Fir 2x10
24129	8	PC	2x10-16 Douglas Fir 2x10
24130	8	PC	2x10-16 Douglas Fir 2x10
24131	8	PC	2x10-16 Douglas Fir 2x10
24132	8	PC	2x10-16 Douglas Fir 2x10
24133	8	PC	2x10-16 Douglas Fir 2x10
24134	8	PC	2x10-16 Douglas Fir 2x10
24135	8	PC	2x10-16 Douglas Fir 2x10
24136	8	PC	2x10-16 Douglas Fir 2x10
24137	8	PC	2x10-16 Douglas Fir 2x10
24138	8	PC	2x10-16 Douglas Fir 2x10
24139	8	PC	2x10-16 Douglas Fir 2x10
24140	8	PC	2x10-16 Douglas Fir 2x10
24141	8	PC	2x10-16 Douglas Fir 2x10
24142	8	PC	2x10-16 Douglas Fir 2x10
24143	8	PC	2x10-16 Douglas Fir 2x10
24144	8	PC	2x10-16 Douglas Fir 2x10
24145	8	PC	2x10-16 Douglas Fir 2x10
24146	8	PC	2x10-16 Douglas Fir 2x10
24147	8	PC	2x10-16 Douglas Fir 2x10
24148	8	PC	2x10-16 Douglas Fir 2x10
24149	8	PC	2x10-16 Douglas Fir 2x10
24150	8	PC	2x10-16 Douglas Fir 2x10
24151	8	PC	2x10-16 Douglas Fir 2x10
24152	8	PC	2x10-16 Douglas Fir 2x10
24153	8	PC	2x10-16 Douglas Fir 2x10
24154	8	PC	2x10-16 Douglas Fir 2x10
24155	8	PC	2x10-16 Douglas Fir 2x10
24156	8	PC	2x10-16 Douglas Fir 2x10
24157	8	PC	2x10-16 Douglas Fir 2x10
24158	8	PC	2x10-16 Douglas Fir 2x10
24159	8	PC	2x10-16 Douglas Fir 2x10
24160	8	PC	2x10-16 Douglas Fir 2x10
24161	8	PC	2x10-16 Douglas Fir 2x10
24162	8	PC	2x10-16 Douglas Fir 2x10
24163	8	PC	2x10-16 Douglas Fir 2x10
24164	8	PC	2x10-16 Douglas Fir 2x10
24165	8	PC	2x10-16 Douglas Fir 2x10
24166	8	PC	2x10-16 Douglas Fir 2x10
24167	8	PC	2x10-16 Douglas Fir 2x10
24168	8	PC	2x10-16 Douglas Fir 2x10
24169	8	PC	2x10-16 Douglas Fir 2x10
24170	8	PC	2x10-16 Douglas Fir 2x10
24171	8	PC	2x10-16 Douglas Fir 2x10
24172	8	PC	2x10-16 Douglas Fir 2x10
24173	8	PC	2x10-16 Douglas Fir 2x10
24174	8	PC	2x10-16 Douglas Fir 2x10
24175	8	PC	2x10-16 Douglas Fir 2x10
24176	8	PC	2x10-16 Douglas Fir 2x10
24177	8	PC	2x10-16 Douglas Fir 2x10
24178	8	PC	2x10-16 Douglas Fir 2x10
24179	8	PC	2x10-16 Douglas Fir 2x10
24180	8	PC	2x10-16 Douglas Fir 2x10
24181	8	PC	2x10-16 Douglas Fir 2x10
24182	8	PC	2x10-16 Douglas Fir 2x10
24183	8	PC	2x10-16 Douglas Fir 2x10
24184	8	PC	2x10-16 Douglas Fir 2x10
24185	8	PC	2x10-16 Douglas Fir 2x10
24186	8	PC	2x10-16 Douglas Fir 2x10
24187	8	PC	2x10-16 Douglas Fir 2x10
24188	8	PC	2x10-16 Douglas Fir 2x10
24189	8	PC	2x10-16 Douglas Fir 2x10
24190	8	PC	2x10-16 Douglas Fir 2x10
24191	8	PC	2x10-16 Douglas Fir 2x10
24192	8	PC	2x10-16 Douglas Fir 2x10
24193	8	PC	2x10-16 Douglas Fir 2x10
24194	8	PC	2x10-16 Douglas Fir 2x10
24195	8	PC	2x10-16 Douglas Fir 2x10
24196	8	PC	2x10-16 Douglas Fir 2x10
24197	8	PC	2x10-16 Douglas Fir 2x10
24198	8	PC	2x10-16 Douglas Fir 2x10
24199	8	PC	2x10-16 Douglas Fir 2x10
24200	8	PC	2x10-16 Douglas Fir 2x10





**For more information contact:**



[www.luxwood.com](http://www.luxwood.com)  
1 888-755-2020  
[sales@luxwood.com](mailto:sales@luxwood.com)