

TOTAL HOME DESIGN

Design Estimate Drawings Bill of Materials

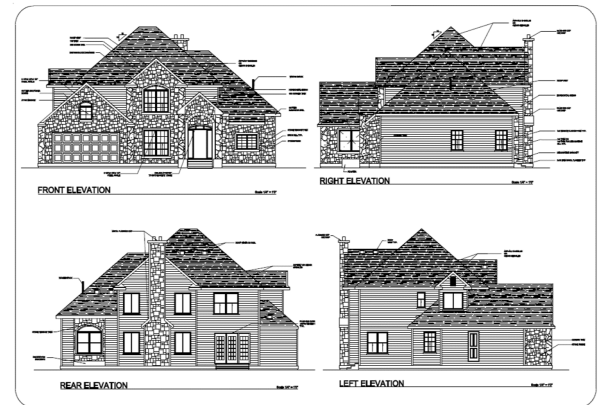
REVOLUTIONARY TAKEOFF & ESTIMATING

- Building Information Modeling (BIM) solutions for Design Professionals, Builders, Remodelers
- Create high quality 3D presentations, 2d drawings
- Detailed drawings and construction documents
- Design interiors and landscapes, and much more
- Wall, floor and roof framing, optimized cut lists
- DWG file format ensures compatibility for sharing
- Links to POS and most third party software like truss and joist programs, door configurators and 2020 Design
- Detailed working drawings, accurate bill of materials
- Automatic schedules
- Stand-alone or network versions; highly customizable to your needs
- Detailed labour calculations; quickly create professional quotes
- Comprehensive training and support

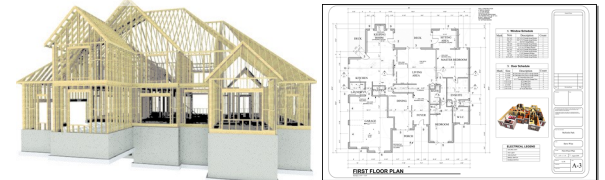
CONVEY IDEAS WITH CLARITY



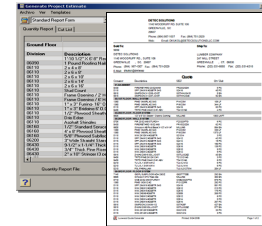
SmartView™ TECHNOLOGY



FRAMING DRAWINGS, TAKEOFFS



MATERIAL LISTS



POS INTEGRATION



Contact us today ...

discover how we can help grow your business

✉ info@luxwood.com

☎ 888 755-2020

www.luxwood.com